

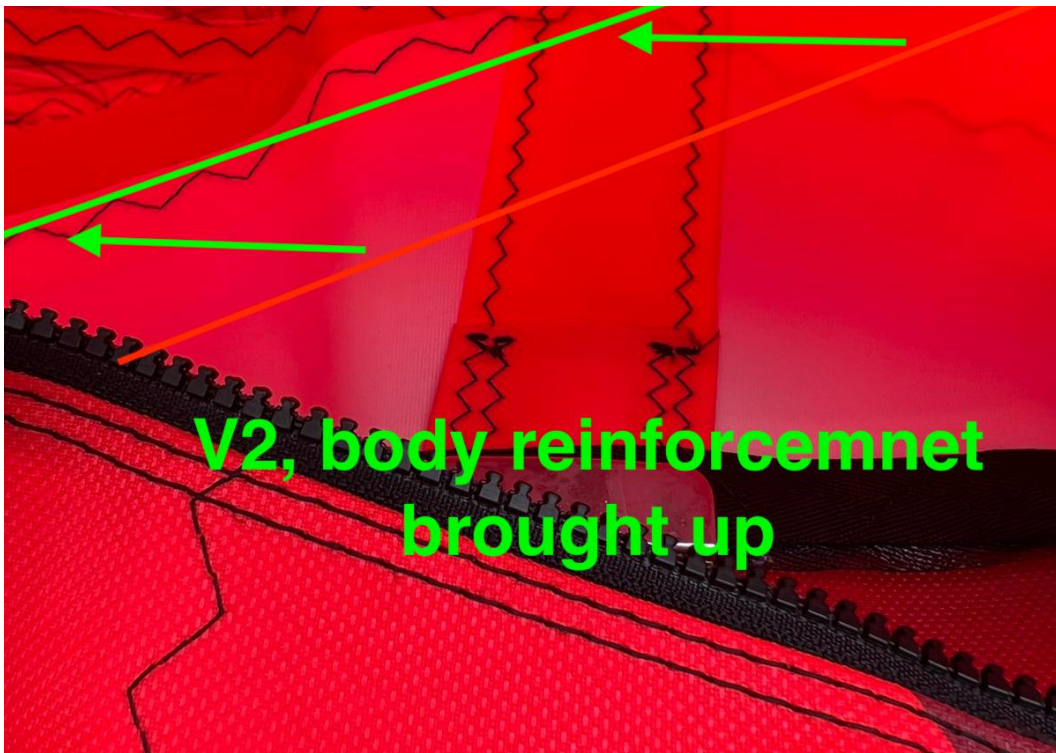
# Changes for V2 HGO sails

18 April 2023

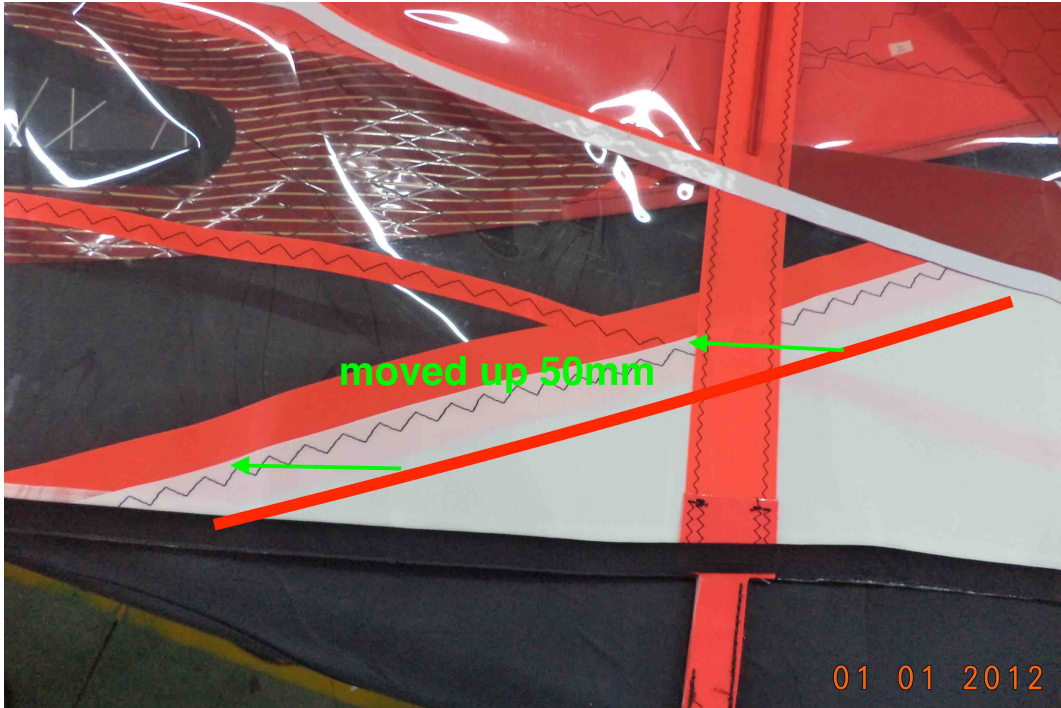
1. CAM PANEL batten #7:



Body original patch V1 sail



Body patch brought up 50 mm on V2



Body patch brought up 50 mm on V2



2. LEECH PATCHES AT END OF #4 AND #5:



Batten #4 leech reinforcement comparison V1 and V2





Batten #5 leech reinforcement comparison V1 and V2



### 3. EXTRA PATCH AT CLEW



Reinforce patch at clew, comparison V1 and V2

4. HEAD WEBBING reinforcement



Patch added at top

5. Opening for drainage at Sleeve on every Batten (Both 9.0 and 8.0).



Every batten has a drainage opening, scroll right



6. Lower boom for the 8.0 HGO



Bottom boom limit was lowered

7. Zipper edges brought to the extremes



Caption